

5.

KLODA II

Podle paměti/ku poslední obyvatel MAROSZ
Nález dlouhých kamenných židel
Výška - 686 m m. m.
Souřadnice - S 49° 61' 043"
V 18° 62' 92"

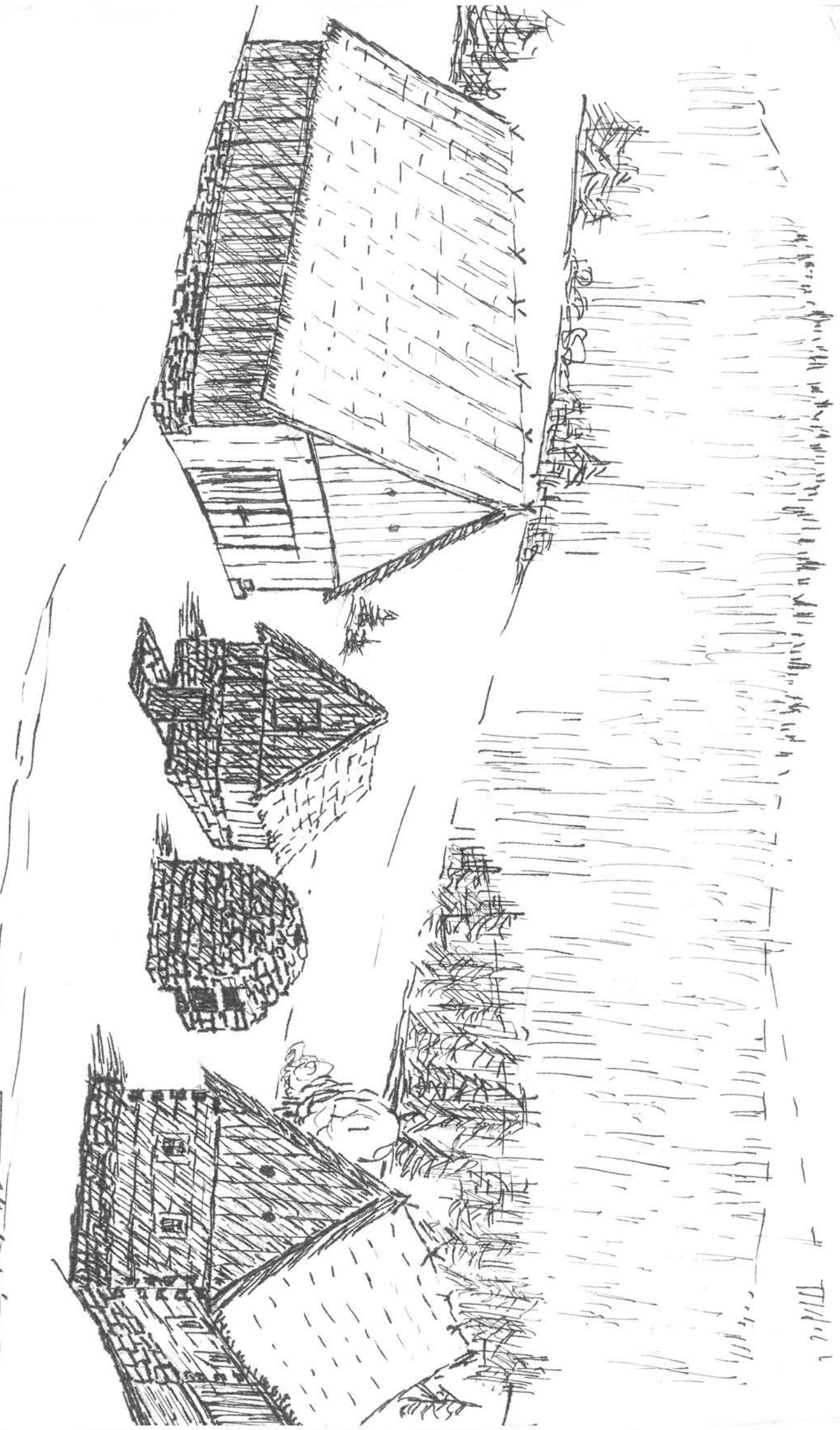


Kidky
z kameze
HORNÍ ILLODA



Nález z pece
části omítky

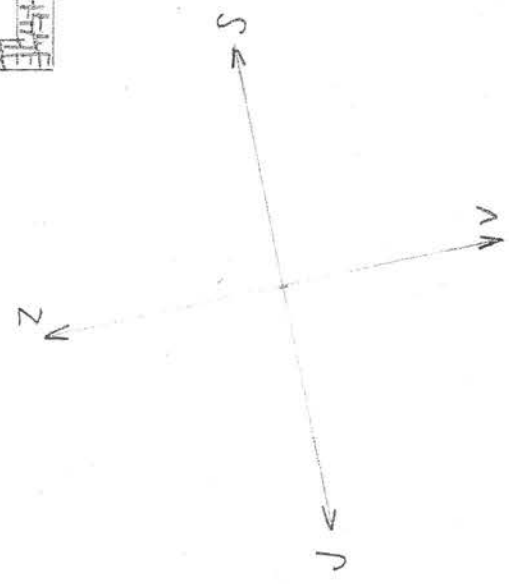
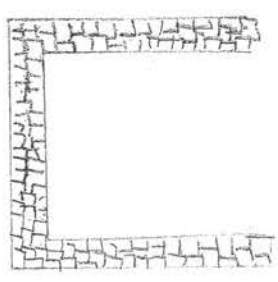
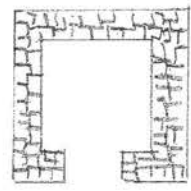
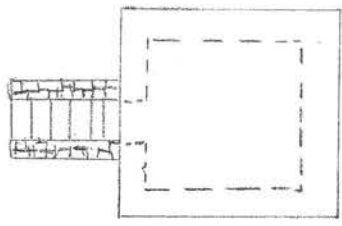
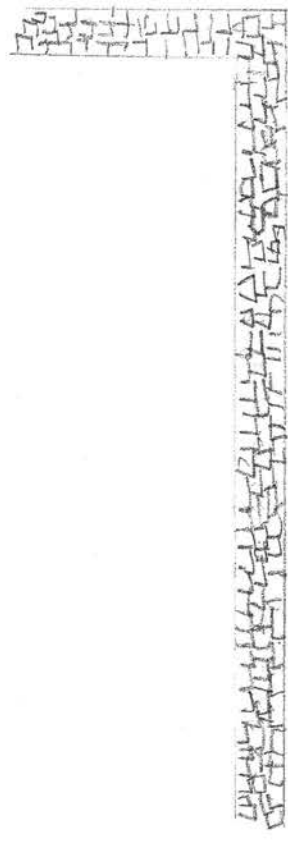
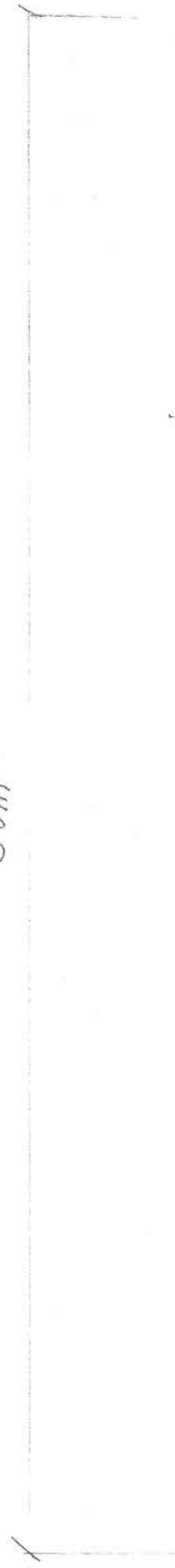




W. M. D. 2009

4 11/11

30m



TRINEC - TYRA. USEDLOST "NAD KLODDU"
ZBYTKY POBEZDIKY. KNYBEL 2008